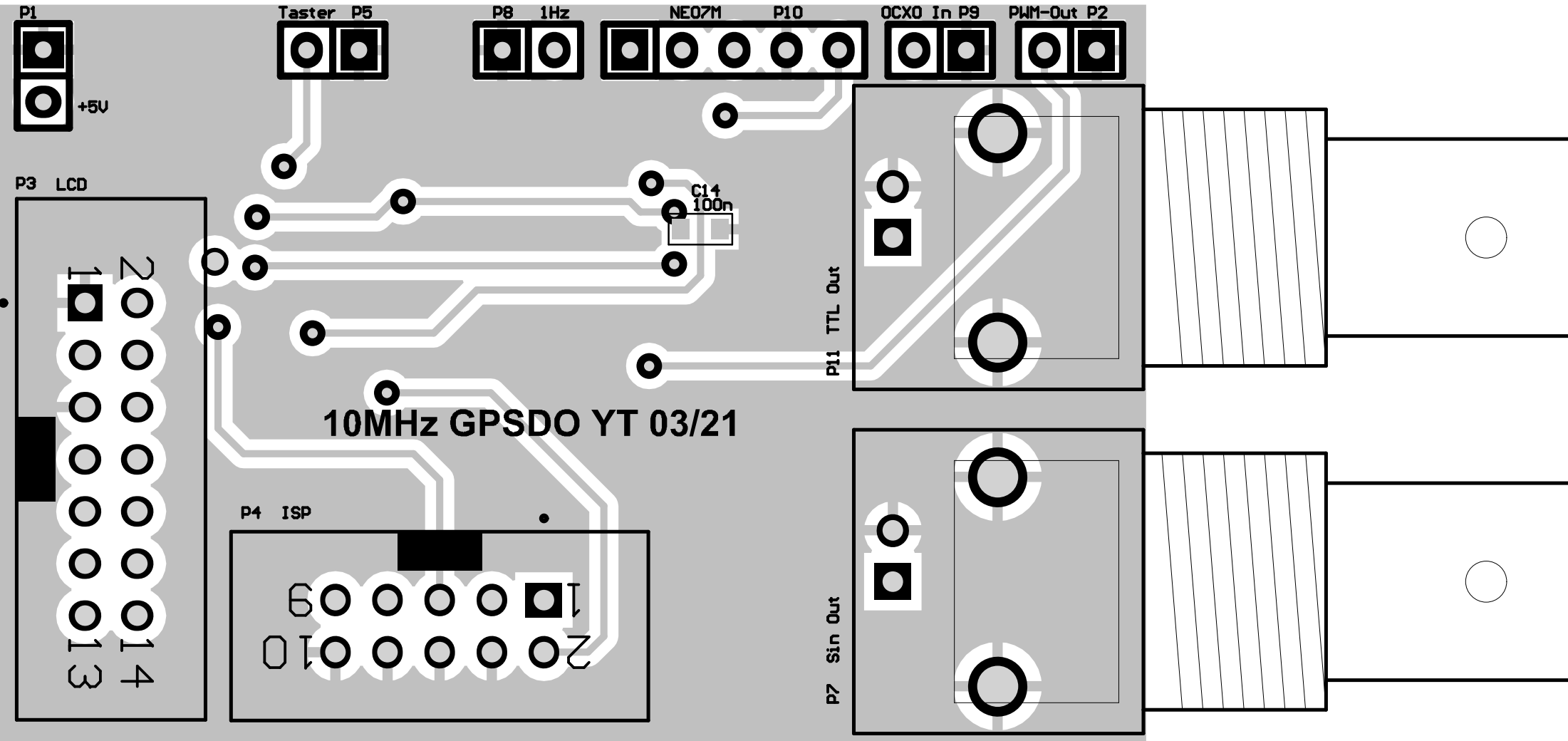


Projekt:
GPSDO nach Yannick Turcotte

Tomtom
DL1MFK
 Datum : 21.02.2022
 Uhrzeit : 21:15:11
 Rev.: B



P1

Taster P5

P8 1Hz

NE07M

P10

OCX0 In P9

PWM-Out P2

+5V

P3 LCD

C14
100n

10MHz GPSDO YT 03/21

P4 ISP

P11 TTL Out

P7 Sin Out

1
2
3
4
5
6
7
8
9
10
11
12
13
14

1
2
3
4
5
6

