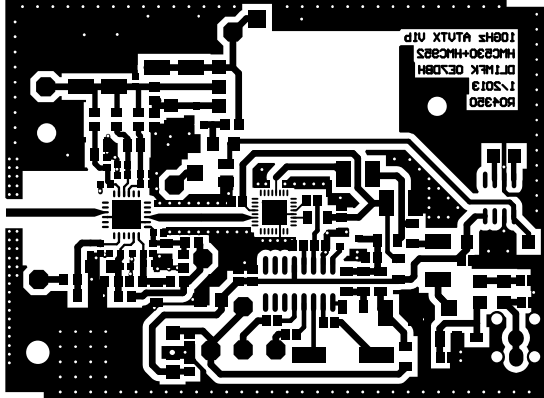
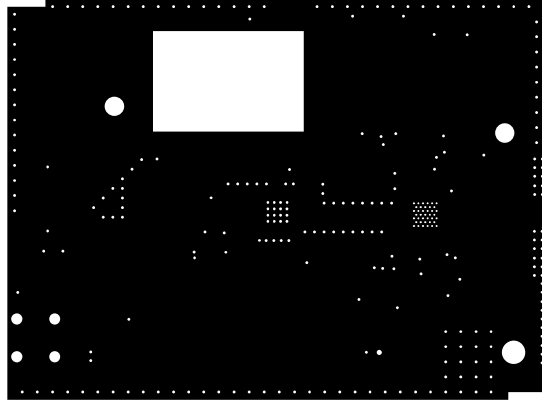


Projekt:  
**10GHz PLL ATX TX mit 35dBm**

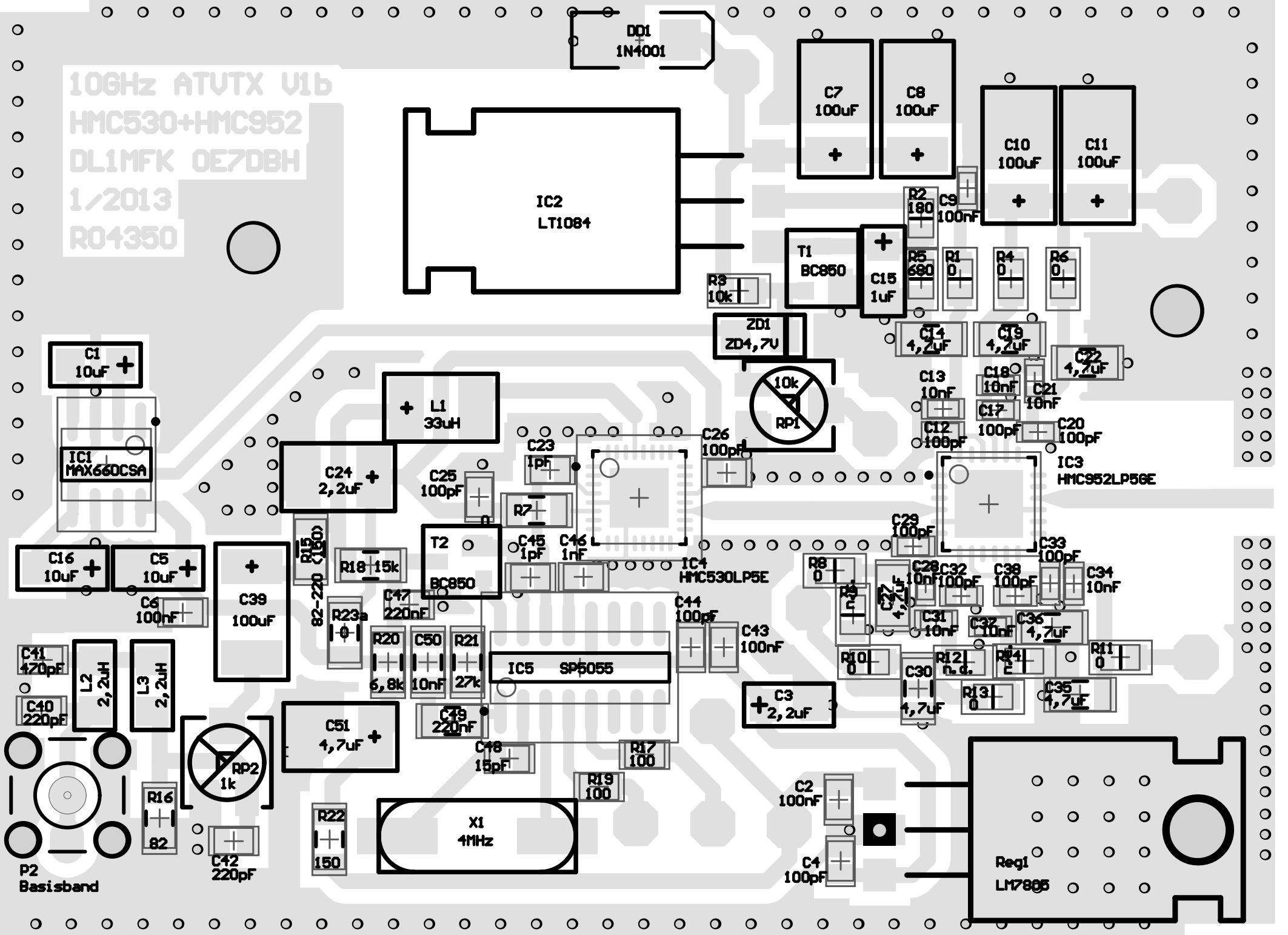
Platinenmaße für Schuster-Gehäuse: 71,35 mm x 53,10; Rogers 4350

Tomtom  
**DL1MFK**  
 Datum : 24.01.2013  
 Uhrzeit : 20:35:03  
 Rev.: B





10GHz ATV TX V1b  
HMC530+HMC952  
DL1MFK OE7DBH  
1/2013  
R04350



DD1  
1N4001

C7  
100uF  
+

C8  
100uF  
+

C10  
100uF  
+

C11  
100uF  
+

IC2  
LT1084

T1  
BC850

C15  
1uF  
+

R3  
10k

R2  
180

C9  
100nF

R5  
680

R1  
0

R4  
0

R6  
0

ZD1  
ZD4,7U

C14  
1,2uF

C19  
1,2uF

C22  
1,2uF

C1  
10uF  
+

L1  
33uH  
+

IC1  
MAX660CSA

C24  
2,2uF  
+

C25  
100pF

C23  
1pF

C26  
100pF

10k  
RP1

C13  
10nF

C18  
10nF

C21  
10nF

C12  
100pF

C17  
100pF

C20  
100pF

IC3  
HMC952LP56E

C16  
10uF  
+

C5  
10uF  
+

C39  
100uF  
+

R15  
82-220

R18  
15k

T2  
BC850

C45  
1pF

C46  
1nF

IC4  
HMC530LP5E

R8  
0

C29  
100pF

C28  
10nF

C32  
100pF

C38  
100pF

C33  
100pF

C34  
10nF

C41  
420pF

L2  
2,2uH

L3  
2,2uH

C6  
100nF

R23a  
10

R20  
6,8k

C50  
10nF

R21  
27k

IC5  
SP5055

C44  
100pF

C43  
100nF

R9  
1nF

C37  
1,2uF

C31  
10nF

C32  
10nF

C35  
4,7uF

C36  
4,7uF

C40  
220pF

C51  
4,7uF  
+

C49  
220nF

C48  
15pF

R17  
100

C3  
2,2uF  
+

R10  
0

C30  
1,7uF

R12  
n.d.

R14  
E

R11  
0

1k  
RP2

R22  
150

X1  
4MHz

C2  
100nF

C4  
100pF

Reg1  
LM7805

P2  
Basisband