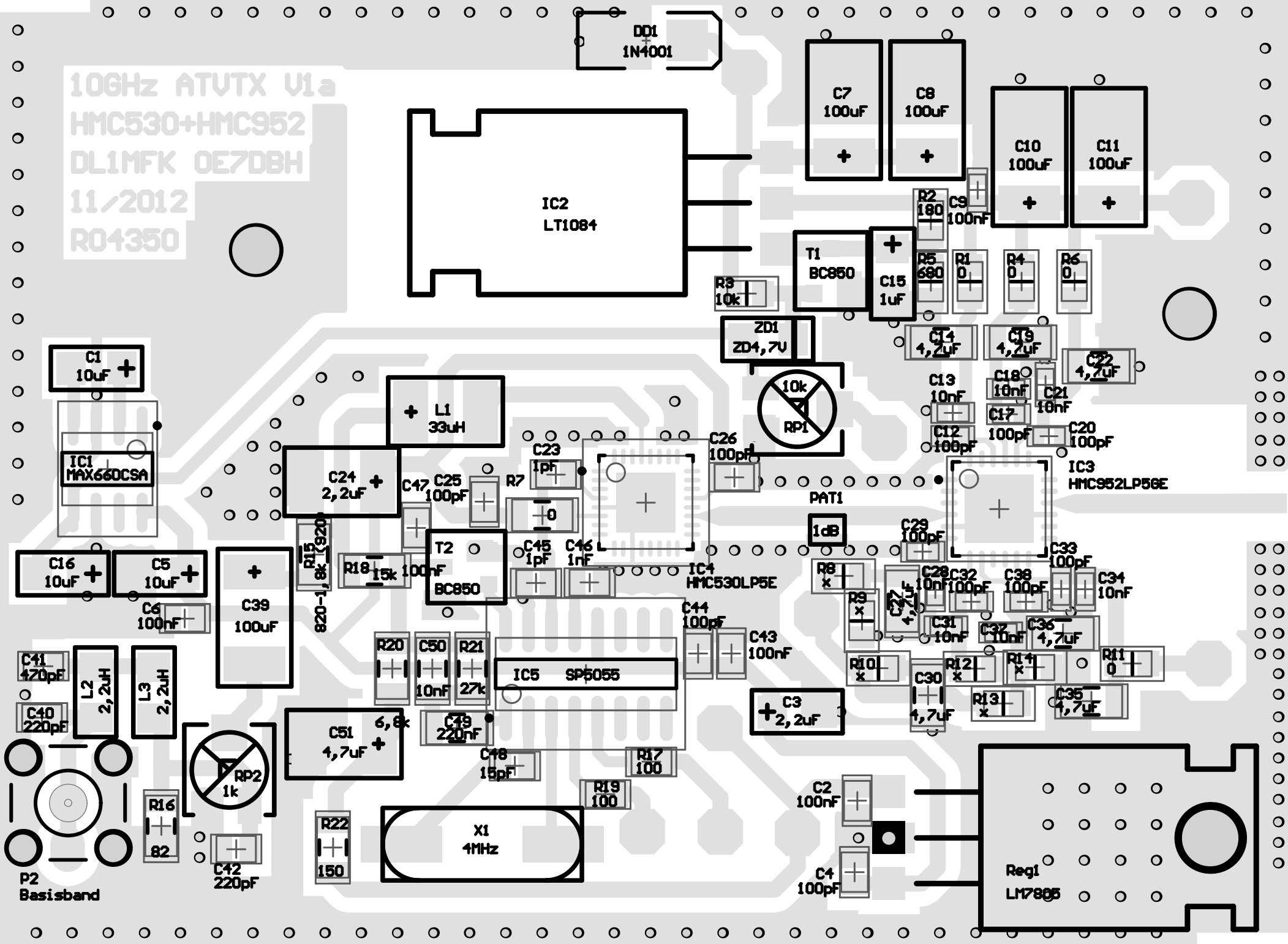


Projekt:
10GHz PLL ATX TX mit 35dBm

Platinenmaße für Schuster-Gehäuse: 71,35 mm x 53,10; Rogers 4350

Tomtom
DL1MFK
 Datum : 08.11.2012
 Uhrzeit : 11:39:52
 Rev.: A

10GHz ATV TX V1a
HMC530+HMC952
DL1MFK OE7DBH
11/2012
R04350



DD1
1N4001

IC2
LT1084

C7
100uF
+

C8
100uF
+

C10
100uF
+

C11
100uF
+

T1
BC850

C15
1uF
+

C1
10uF
+

IC1
MAX660CSA

L1
33uH
+

C24
2,2uF
+

IC4
HMC530LP5E

RP1
10k

IC3
HMC952LP56E

C16
10uF
+

C5
10uF
+

C39
100uF
+

T2
BC850

IC5
SP5055

PAT1
1dB

C41
420pF

L2
2,2uH

L3
2,2uH

C40
220pF

C51
4,7uF
+

C49
220nF

C3
2,2uF
+

P2
Basisband

RP2
1k

R16
82

C42
220pF

R22
150

X1
4MHz

R19
100

C2
100nF

C4
100pF

Reg1
LM7805

