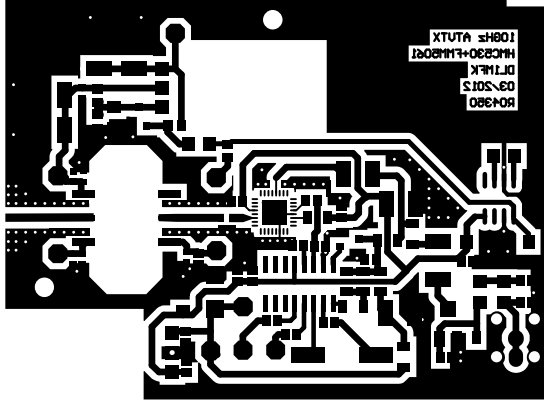
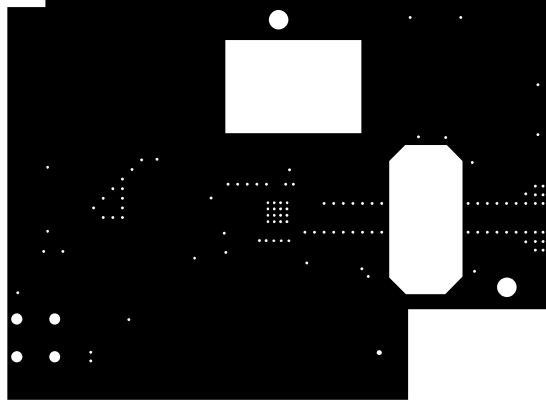


Projekt:
10GHz PLL ATX TX mit 32dBm

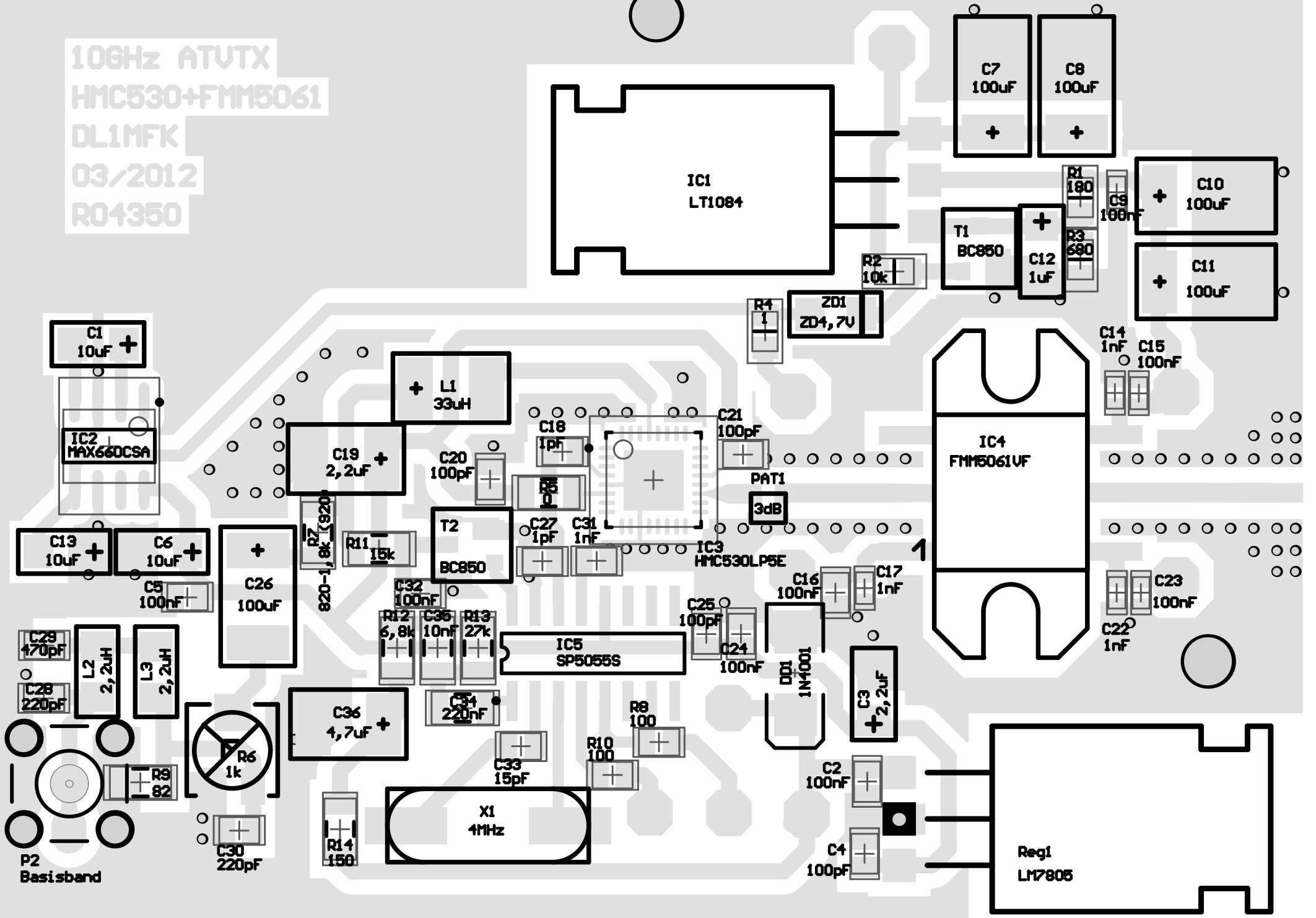
Platinenmaße für Schuster-Gehäuse: 71,35 mm x 53,10; Rogers 4350

Tomtom
DL1MFK
 Datum : 03.03.2012
 Uhrzeit : 22:07:02
 Rev.: A





10GHz ATV TX
HMC530+FMM5061
DL1MFK
03/2012
R04350



IC1
LT1084

C7
100uF
+

C8
100uF
+

C9
100nF
+

C10
100uF
+

C11
100uF
+

T1
BC850
+

C12
1uF
+

R2
10k

ZD1
ZD4,7V

R4
1

C14
1nF

C15
100nF

C1
10uF
+

IC2
MAX660CSA

L1
33uH
+

C19
2,2uF
+

C20
100pF
+

C18
1pF
+

C21
100pF
+

PAT1
3dB

C13
10uF
+

C6
10uF
+

C26
100uF
+

T2
BC850
+

C27
1pF
+

C31
1nF
+

IC3
HMC530LP5E

C16
100nF
+

C17
1nF
+

C23
100nF
+

C22
1nF
+

C29
470pF

L2
2,2uH

L3
2,2uH

C28
220pF

R9
82

R6
1k

C36
1,7uF
+

C34
220nF
+

C33
15pF
+

R10
100

R8
100

C25
100pF
+

C24
100nF
+

D1
1N4001

C3
2,2uF
+

X1
4MHz

C2
100nF
+

C4
100pF
+

Reg1
LM7805

P2
Basisband

C30
220pF
+

R14
150