

Projekt: **5,7GHz Lechner-RX-Modulträger**

Tomtom **DL1MFK**

Rev: **B** Datum: 18.01.2018 Uhrzeit: 09:28:52

Datei: 5.7GHz RX.SchDoc

VDD	14	RA0/AN0	17
VSS	5	RA1/AN1	18
		RA2/AN2/VREF	1
		RA3/AN3/CMP1	2
		RA4/T0CK1/CMP2	3
		RA5/MCLR/VPP	4
		RA6/OSC2/CLKOUT	5
		RA7/OSC1/CLKIN	6
		RB0/INT	7
		RB1/RX/DT	8
		RB2/TX/CK	9
		RB3/CCP1	10
		RB4/PGM	11
		RB5	12
		RB6/T1OSO/T1CKI/PGC	13
		RB7/T1OSI/PGD	14

1	RX-Modul 1	17
2	SPI GND=DIP	16
3	SPI-DAT / CH1	15
4	SPI-LE / CH2	14
5	SPI-CLK / CH3	13
6	GND	12
7	GND	11
8	GND	10
9	GND	9
10	GND	8
11	GND	7
12	GND	6
13	GND	5
14	GND	4
15	GND	3
16	GND	2
17	GND	1

IC2 PIC16F628A-I/O

S1 SW-DIP8

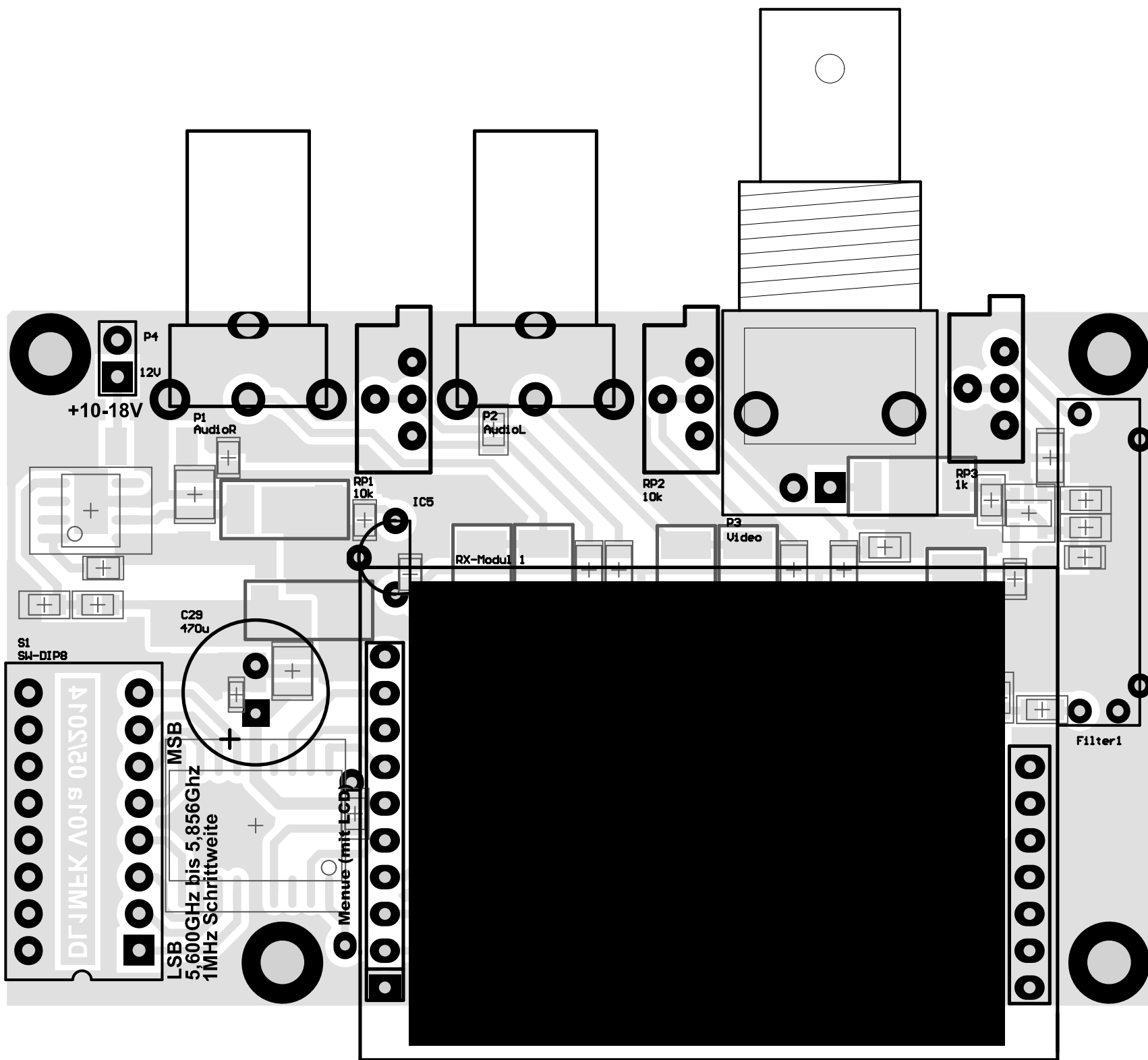
Audio De-Emphase 50us
(Pegelunterschied 1kHz zu 15kHz beträgt 13dB)

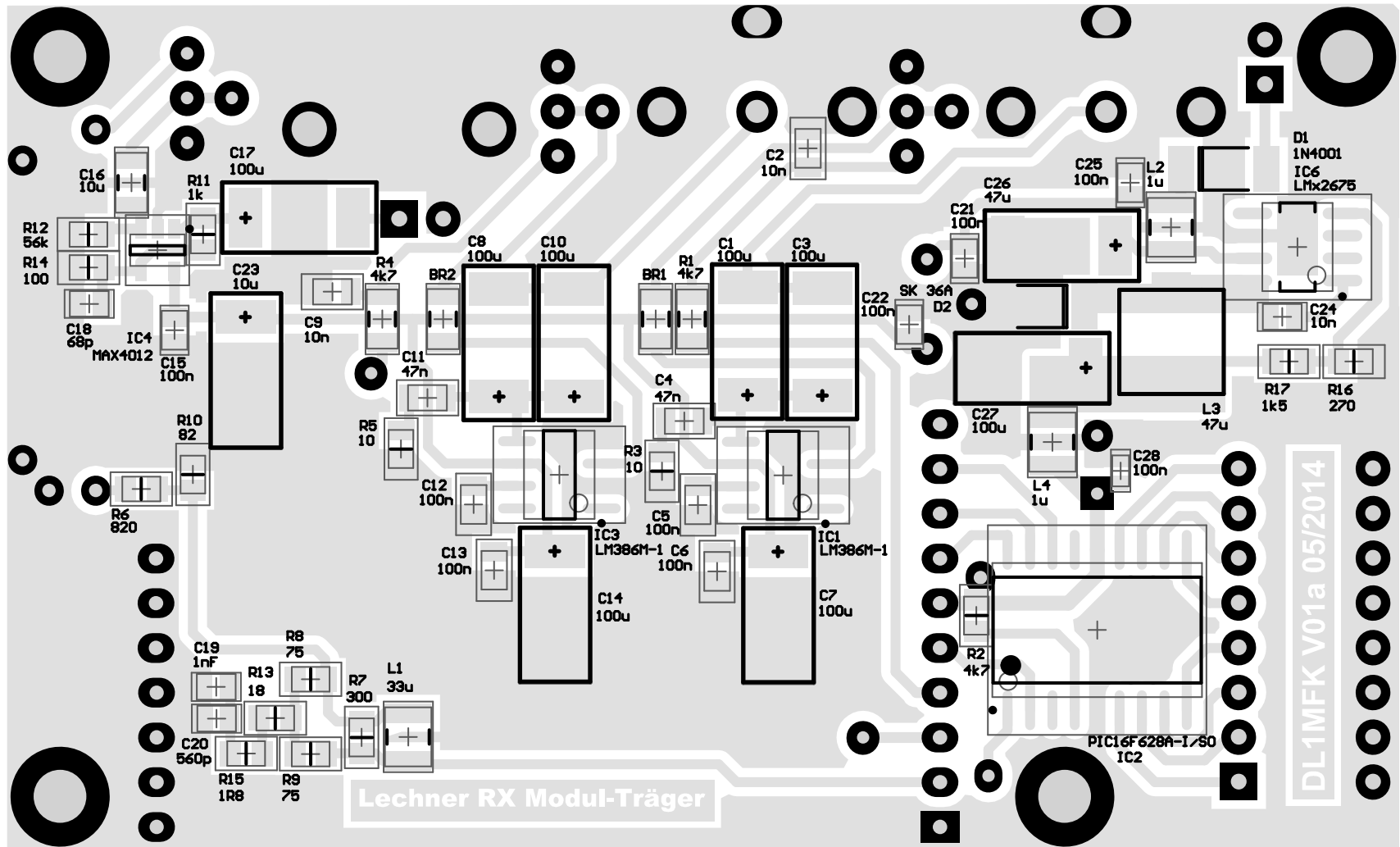
Audio De-Emphase ca.50us
(Pegelunterschied 1kHz zu 15kHz beträgt 13dB)

De-Emphase nach CCIRR

Bei LMx2675-5 R17=0Ohm R16 fehlt

LOW-ESR-ELKO !!!!





Lechner RX Modul-Träger

DL1MFK V01a 05/2014

