

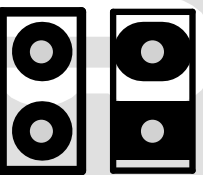
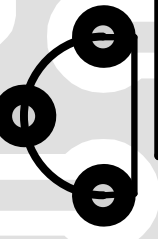
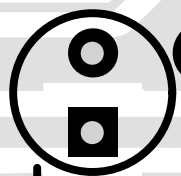
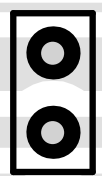
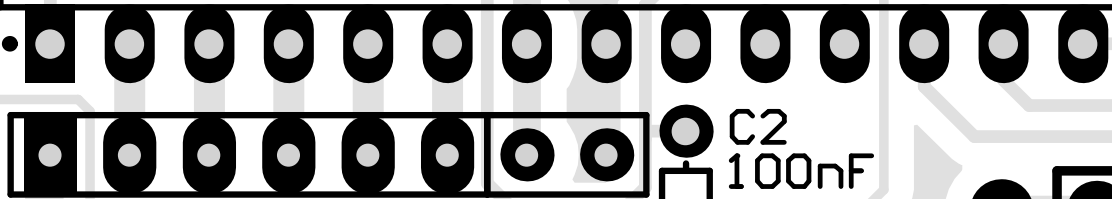
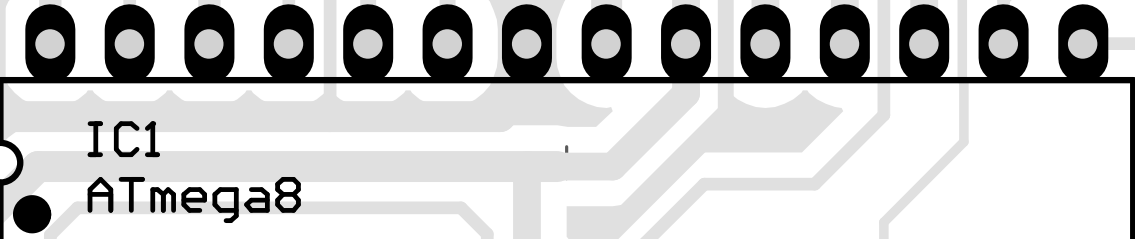
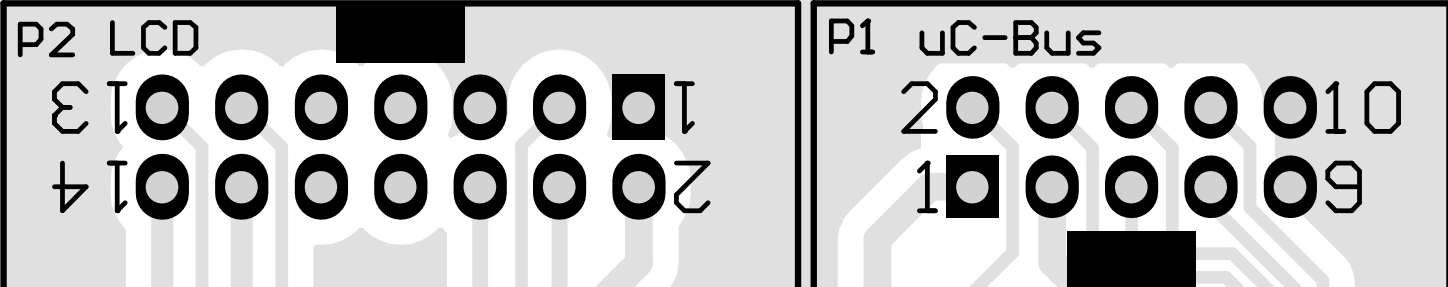
Projekt:
ATmega8 Testboard mit LCD

Tomtom
DL1MFK

Datum: 03.09.2010
 Uhrzeit: 15:49:51
 Rev.: **D**

Datei: MAX4357_CPU_2x16 Disp_V1.SchDoc

DL1MFK 08.10
Video-Steuerung



C5 100nF R2 4.7k C3 10uF 78L05

