

Projekt:
Mini BBA mit NE592 Dip 8 Version 2

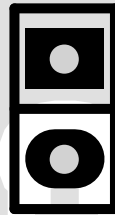
Datei: Mini BBA NE592 DIP8 V2_SchDoc

Tomtom
DL1MFK

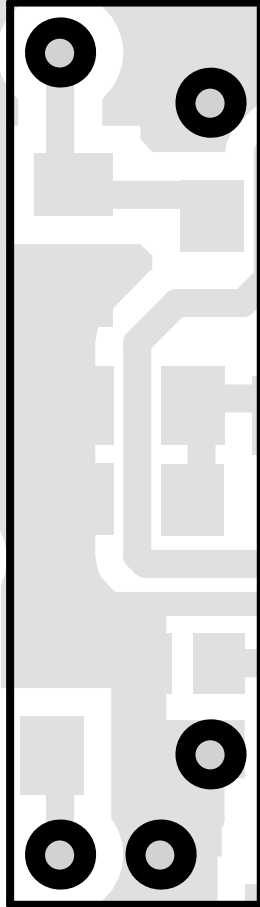
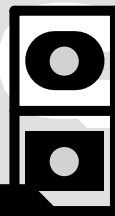
Rev.: A Datum: 03.09.2010
 Uhrzeit: 18:15:42

Videofilter

P1
Video

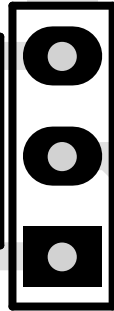


P4
Audio



IC1
NE592 DIP8

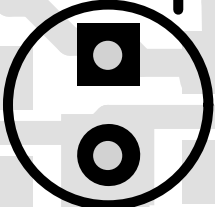
pos/neg



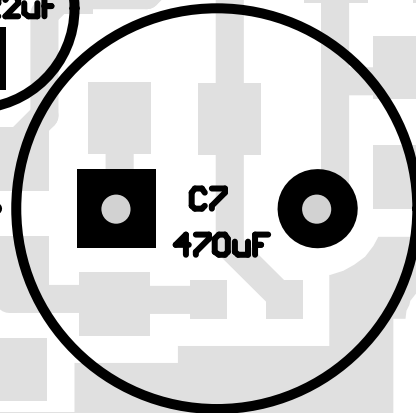
C45 22uF



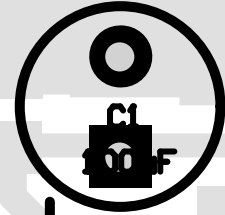
C5 10uF



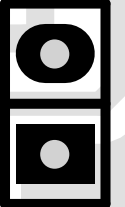
C7 470uF



C1 100uF



P2
BB



78L10



P3
10-15V 100mA



MiniBBA Dip8 Vo.2c

DTJWK 0e/10

DL1MFK 06/10

MiniBBA Dip8 Vo.2c

